

PivotTable1

Sum of Value	Column	Tab							Grand Total
Store	>Zero	Mon	Tue	Wed	Thu	Fri	Sat		
1	Sun	1	1	1	0	0	1	1	5
2	Sun	1	1	0	0	1	1	0	4
3	Sun	1	1	0	1	0	0	1	4
4	Sun	1	0	0	0	1	1	1	4
5	Sun	0	0	1	1	0	0	0	2
6	Sun	1	1	0	1	0	0	0	3
7	Sun	0	0	1	1	0	0	1	3
8	Sun	0	0	0	1	0	1	0	2
9	Sun	1	1	1	0	1	0	0	4
10	Sun	1	1	1	0	1	0	0	4
11	Sun	0	0	1	0	0	0	0	1
12	Sun	0	0	0	1	1	0	0	2
13	Sun	1	1	0	0	0	0	0	2
14	Sun	0	1	0	0	0	0	0	1
15	Sun	1	1	1	0	0	1	1	5
16	Sun	1	0	1	0	1	0	0	3
17	Sun	1	1	0	0	1	1	0	4
18	Sun	0	0	0	0	0	0	1	1
19	Sun	1	1	0	0	1	1	0	4
<b>Grand Total</b>		<b>12</b>	<b>11</b>	<b>8</b>	<b>6</b>	<b>8</b>	<b>7</b>	<b>6</b>	<b>58</b>

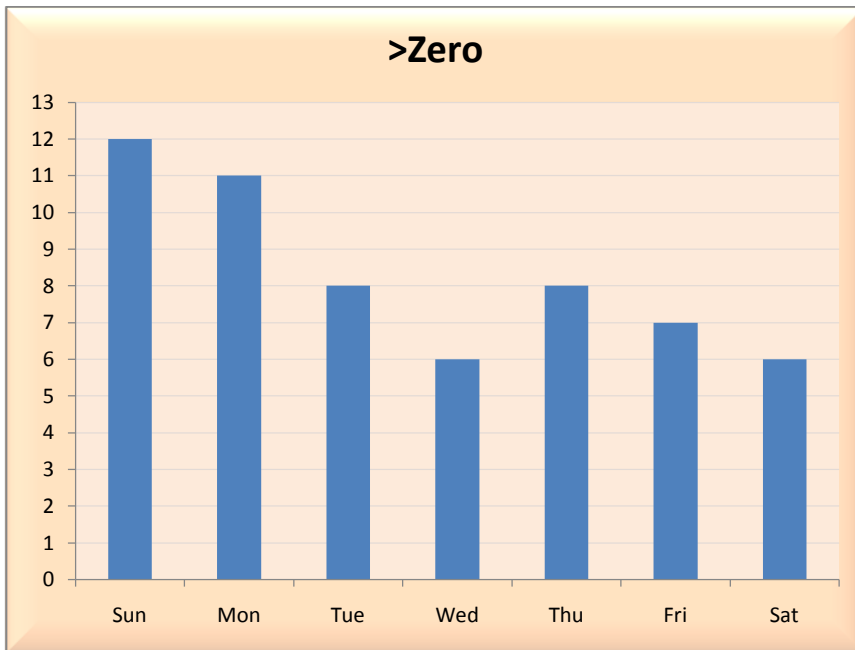


Table1

Store	Qty
1	2.4
2	0
4	1.8
19	0
12	0
7	2.3
18	1.9
9	0
17	0
13	0
3	3.7
15	1
5	0
16	0
10	0
14	0
11	0
6	0
8	0